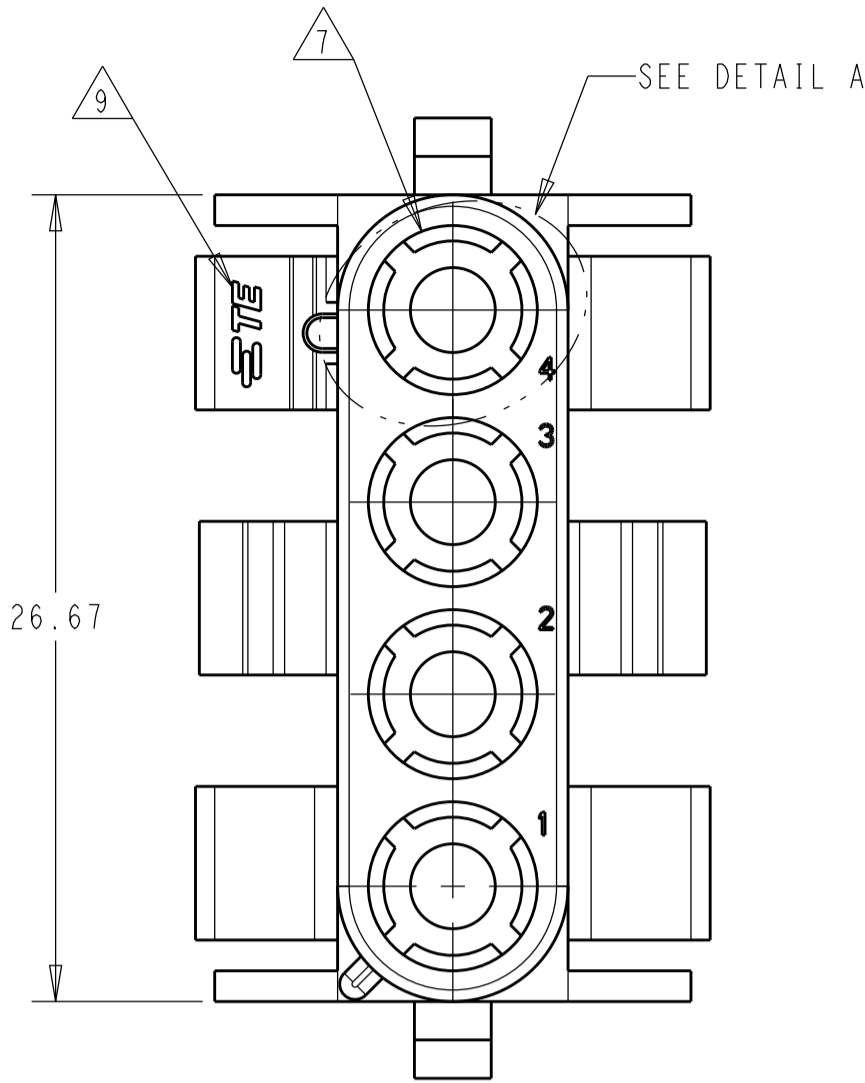
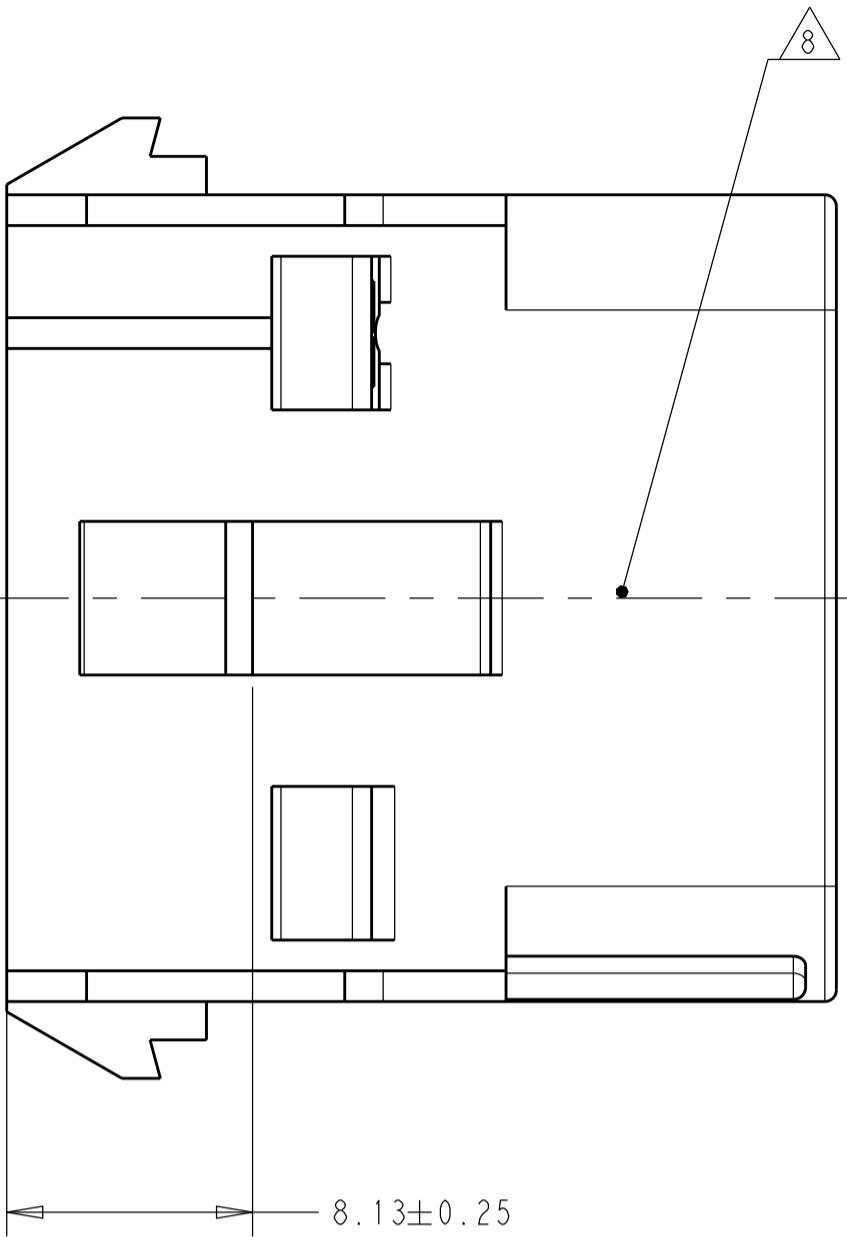
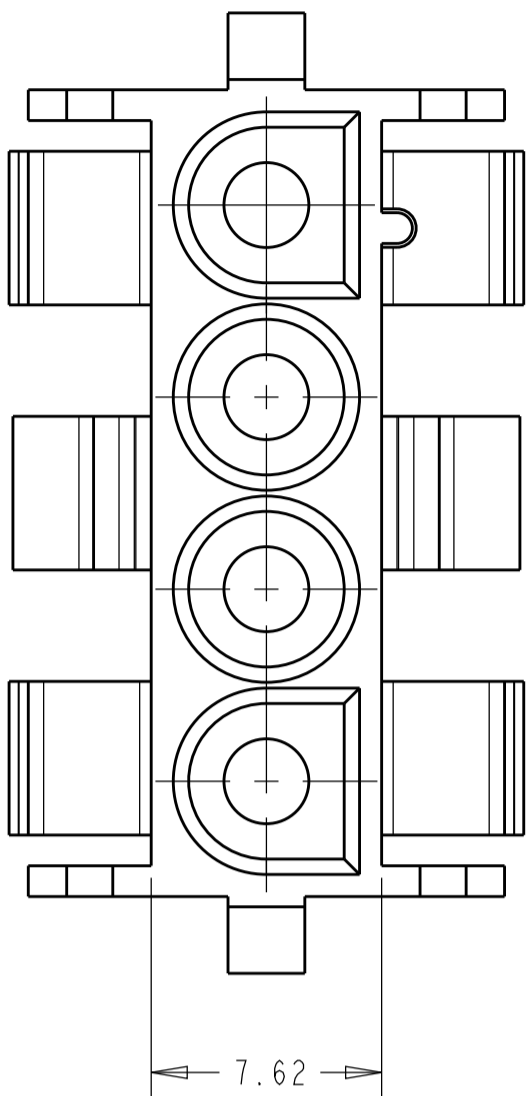
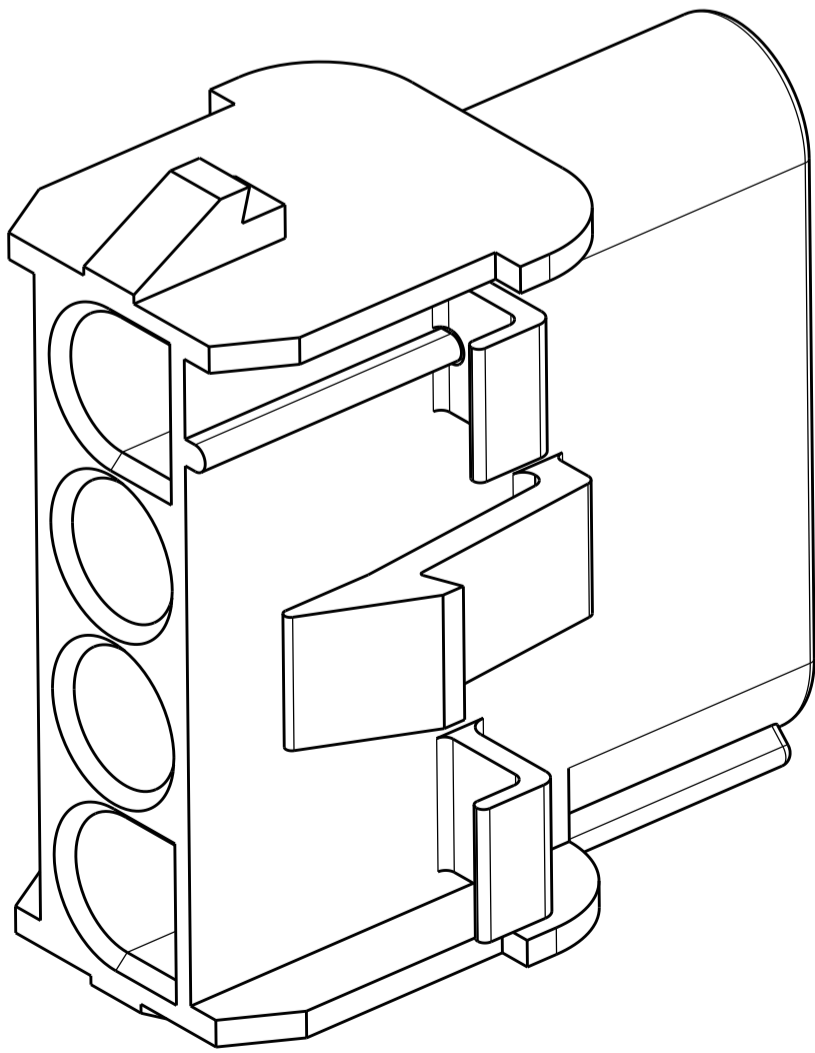
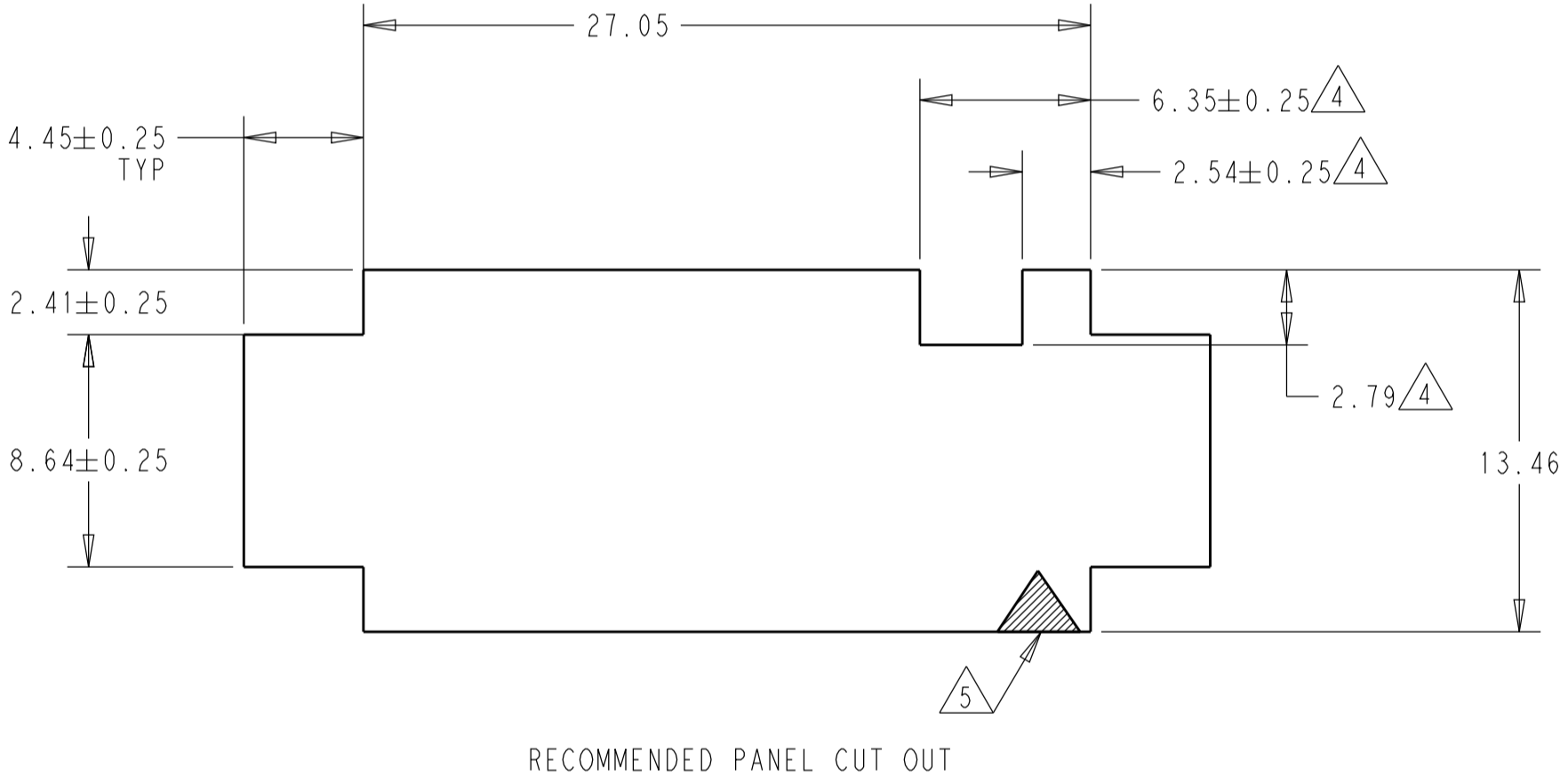
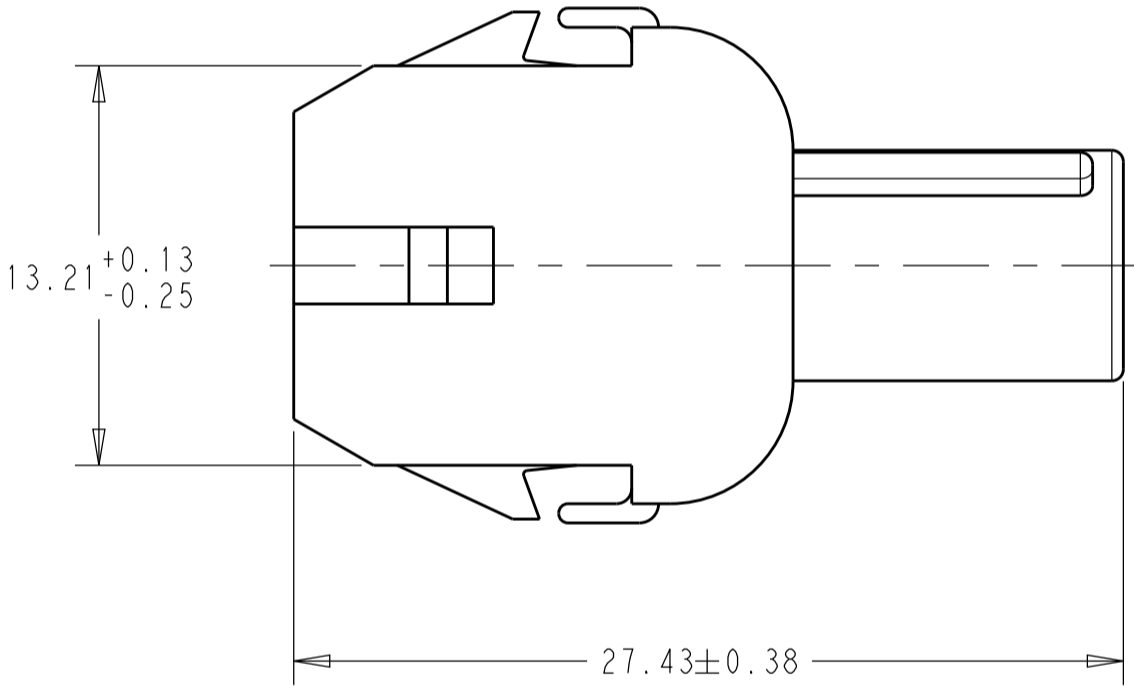
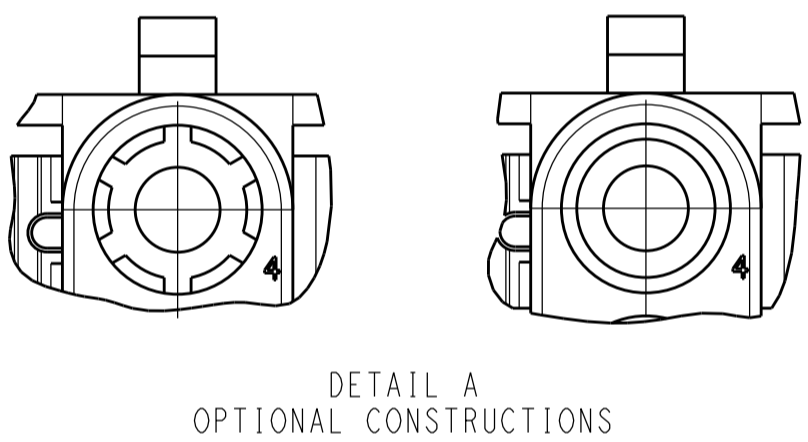




| REVISIONS | | | | | |
|-----------|-----|---------------------------|-----------|-----|------|
| P | LYR | DESCRIPTION | DATE | DWN | APVD |
| | V6 | REDRAWN PER ECO-19-005708 | 03MAY2019 | BKW | SF |
| | W | REVISED PER ECO-20-006810 | 01JUN2020 | BKW | SF |
| | | | | | |
| | | | | | |



- MATES WITH APPROPRIATE UNIVERSAL MATE-N-LOCK™ PLUG
- RECOMMENDED PANEL THICKNESS 0.76 - 2.29.
- PANEL MUST BE PUNCHED SO THAT THE HOUSING ENTERS THE PANEL IN THE SAME DIRECTION AS THE PUNCH.
- OPTIONAL FOR KEYING HOUSING IN PANEL.
- CIRCUIT NUMBER 1 LOCATION.
- DIMENSIONS SHOWN REPRESENT PRODUCT IN DRY, AS MOLDED, CONDITION. ADDITIONAL 2% GROWTH DUE TO SUBSEQUENT MOISTURE ABSORPTION MAY OCCUR AND SHOULD BE ACCOUNTED FOR.
- FOUR RIBS EQUALLY SPACED, NO SPECIFIC ORIENTATION. NO RIBS OR SIX RIBS EQUALLY SPACED, NO SPECIFIC ORIENTATION, OPTIONAL.
- UNDERWRITERS RECOGNIZED COMPONENT LOGO AND CSA CERTIFICATION LOGO TO BE LOCATED ONCE EACH ON SIDE OF HOUSING.
- TRADEMARK LOCATION: AMP OR TE



| | | |
|---------------------|---------|-------------|
| CUSTOMER RESTRICTED | NATURAL | 350780-2 |
| | BLACK | 1-350780-9 |
| OBSOLETE | GRAY | 1-350780-8 |
| OBSOLETE | BLUE | 1-350780-6 |
| | GREEN | 1-350780-5 |
| OBSOLETE | YELLOW | 1-350780-4 |
| OBSOLETE | ORANGE | 1-350780-3 |
| OBSOLETE | RED | 1-350780-2 |
| OBSOLETE | BROWN | 1-350780-1 |
| | NATURAL | 350780-1 |
| | COLOR | PART NUMBER |

| | | | | | | | | | | | | | |
|---|--|----------------------------------|---|-------------|---|------------------|--------------------|--------------|----------------------|------------|----------|------------|--|
| THIS DRAWING IS A CONTROLLED DOCUMENT. | | DWN B. WEAVER 03MAY2019 |  TE Connectivity | | NAME CAP, 4 CIRCUIT, UNIVERSAL MATE-N-LOCK | | RESTRICTED TO - | | | | | | |
| TOLERANCES UNLESS OTHERWISE SPECIFIED: | | CHK S. FERNANDES 03MAY2019 | | | | | | | | | | | |
| DIMENSIONS: | | APVD T. BENCHOFF 03MAY2019 | PRODUCT SPEC 108-1031 | | SIZE A | | CAGE CODE 00779 | | DRAWING NO 350780 | | REV W | | |
| mm | | APPLICATION SPEC 114-1010 | | WEIGHT - | | CUSTOMER DRAWING | | SCALE 4:1 | | SHEET 1 | | OF 1 | |
|  | | 0 PLC ±.1 | | 1 PLC ±.13 | | 2 PLC ±.13 | | 3 PLC ±.13 | | 4 PLC ±.13 | | ANGLES ±1° | |
| MATERIAL NYLON 94V-0 | | FINISH | | - | | - | | - | | - | | - | |